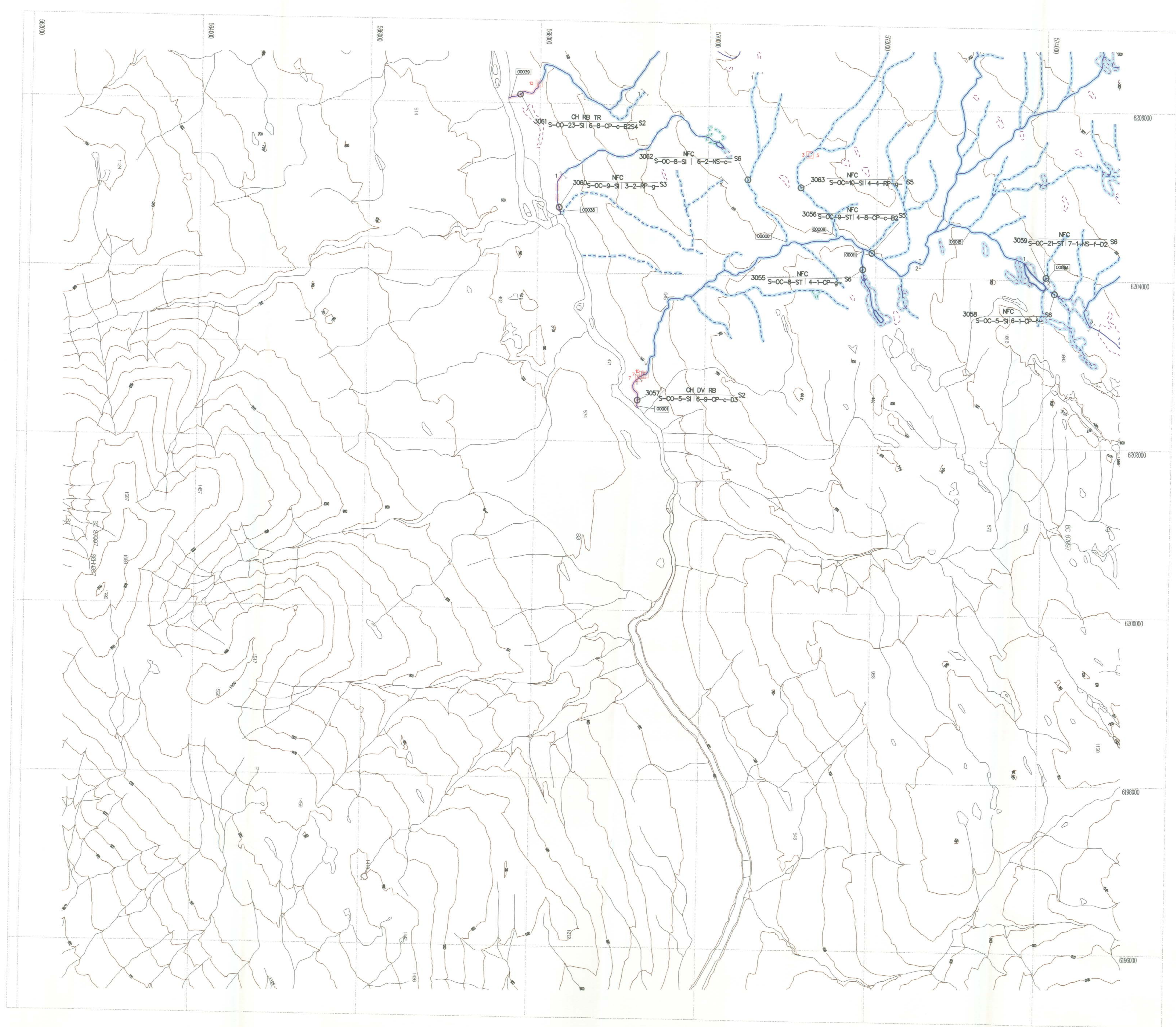


Reconnaissance (1:20,000) Fish and Fish Habitat Stream Inventory in the Kispix Working Group

SKEENA RIVER

Date: 1998/06/11 (yyyy/mm/dd)

Company: SJS of TRITON Environmental Consultants Ltd.



Stream Information Summary

123-12345-1234 Watershed Code

Stream Summary Symbol

Sample Site ID: S-PC-3-R-12-12-RP-g-C3C453

Stream(S) Wetland(W): S-PC-3-R-12-12-RP-g-C3C453

Stream Classification

Stream Class	Stream Zone	Management Zone	Management Area
S1	50	20	70
S2	30	20	50
S3	20	20	40
S4	0	30	30
S5	0	30	30
S6	0	20	20

Obstructions

- Beaver Dam
- Cascade
- Dam
- Falls
- Culvert
- Persistent Debris Accumulation

Features

- Eroded Bank
- Alluvial Fan
- Colluvial Fan
- Talus Cone
- Rock Outcrop
- Slumping Bank
- Slump
- Bedrock-Confinement
- Landslide Debris
- Landslide Area
- Dewatered Section
- Braided Stream
- Backwater
- Wetland/Marsh
- Spring
- Groundwater
- Tributary
- Side Channel

Enhancement/Management Activities

- Fish Hatchery
- Fishway
- Incubation Box
- Spawning Channel
- Weir
- Waste Regulated Site Aquaculture
- Waste Regulated Site Hatchery
- Counting Fence
- Fisheries Sensitive Zone

Hydrometric Stations

- Flow Active
- Flow Inactive
- Well
- Both Active
- Both Inactive
- Level Active
- Level Inactive

Base Map Anomalies

- Field-Identified Stream
- Base Map Discontinuity
- No Visible Channel

Legend

- Fish Presence - Sampled
- Fish Presence - Inferred
- No Fish Presence - Sampled
- No Fish Presence - Inferred

TRM Features

River/Stream	Swamp	Icefield
River/Stream - intermittent	Marsh	Glacier
Lake	Island	Road - 1 lane, loose surface
Lake - intermittent	Sand/Gravel Bar	Road - rough surface
Lake - indefinite	Coastline	Index Contour (100m interval)

* hydrological features outside the project study area appear as thin black lines

Fish Species

CODE	DESCRIPTION	CODE	DESCRIPTION	CODE	DESCRIPTION
BT	Bull Trout	NS	Not Sampled		
CH	Chinook	RB	Rainbow Trout		
CO	Coho	SU	Suckers, General		
CT	Cutthroat Trout	TR	Trout, General		
DV	Dolly Varden	TB	Threespine Stickleback		
NFC	No Fish Caught				

SOURCE: MELP

Stream Summary Symbol Information

REACH CHARACTERISTICS	CHANNEL MORPHOLOGY	DISTURBANCES
CODE DESCRIPTION	CODE DESCRIPTION	CODE DESCRIPTION
AI Features/Characteristics	Dominant Substrate	Morphology
NS not specified	F fines	C1 extensive riffles or cascades
NVC no visible channel	G gravel	C2 mixed pool area
CO confined	C cobble	C3 dewatered mid channel bar
EN entrenched	B boulder	C4 multiple channel or braided
OC occasionally confined	R bedrock, boulders, etc.	C5 disturbed stone lines
UN unconfined	SP step pool	Large Woody Debris
NI not applicable	RP riffle pool	D1 small woody debris
	CP cascade pool	D2 large woody debris
	SP step pool	D3 recently formed LWD jams
		Sedimentation
		S1 homogeneous bed features
		S2 sediment fingers
		S3 sediment wedges
		S4 extensive bars
		S5 extensively scoured zones

Disclaimer

The Province has not accepted the contents of this product for the purposes of the Forest Practices Code, and reserves the right to dispute the validity of summarized results. The Province does not necessarily agree with the classification assigned to any individual stream reach, for use in logging plans, silviculture prescriptions or any other application.

Inventory Source Information Codes

CODE	DESCRIPTION	CODE	DESCRIPTION	CODE	DESCRIPTION	CODE	DESCRIPTION
BASE	Base Map	INV	Inventory	AI	Aerial Photography	CODE	DESCRIPTION
TR	1:20,000 TRM Maps	INV	Field Inventory	VD	Video	VD	Video
WTS	1:20,000 WTS Maps	SS	Summary	VPC	Video, corrected	VPC	Video, corrected
OTH	Other Map Source	N/A	Not Applicable	OTH	Other	OTH	Other
SIR	SIR Stream Symbol	OTH	Other	INV	Inventory	INV	Inventory
INV	Field Inventory	LOC	Location Information	SS	Summary	SS	Summary
SS	Summary	LOC	Location Information	SS	Summary	SS	Summary
N/A	Not Applicable	LOC	Location Information	SS	Summary	SS	Summary
OTH	Other	LOC	Location Information	SS	Summary	SS	Summary

Inventory Source Information

BASE: TR STR SYM: INV
 LOC: FDG LK SYM: N/A
 HAB: INV
 FISH: INV
 DATE INV: 1997/09/22 INV MGMT: MELP

Adjoining Sheet Index in the British Columbia Geographic System

104A.00	0940.001	0940.002
103P.00	093M.091	093M.092
103P.080	093M.081	093M.082

Base Map Information

Projection: Universal Transverse Mercator
 Datum: North American Datum - NAD83
 UTM Zone: 9